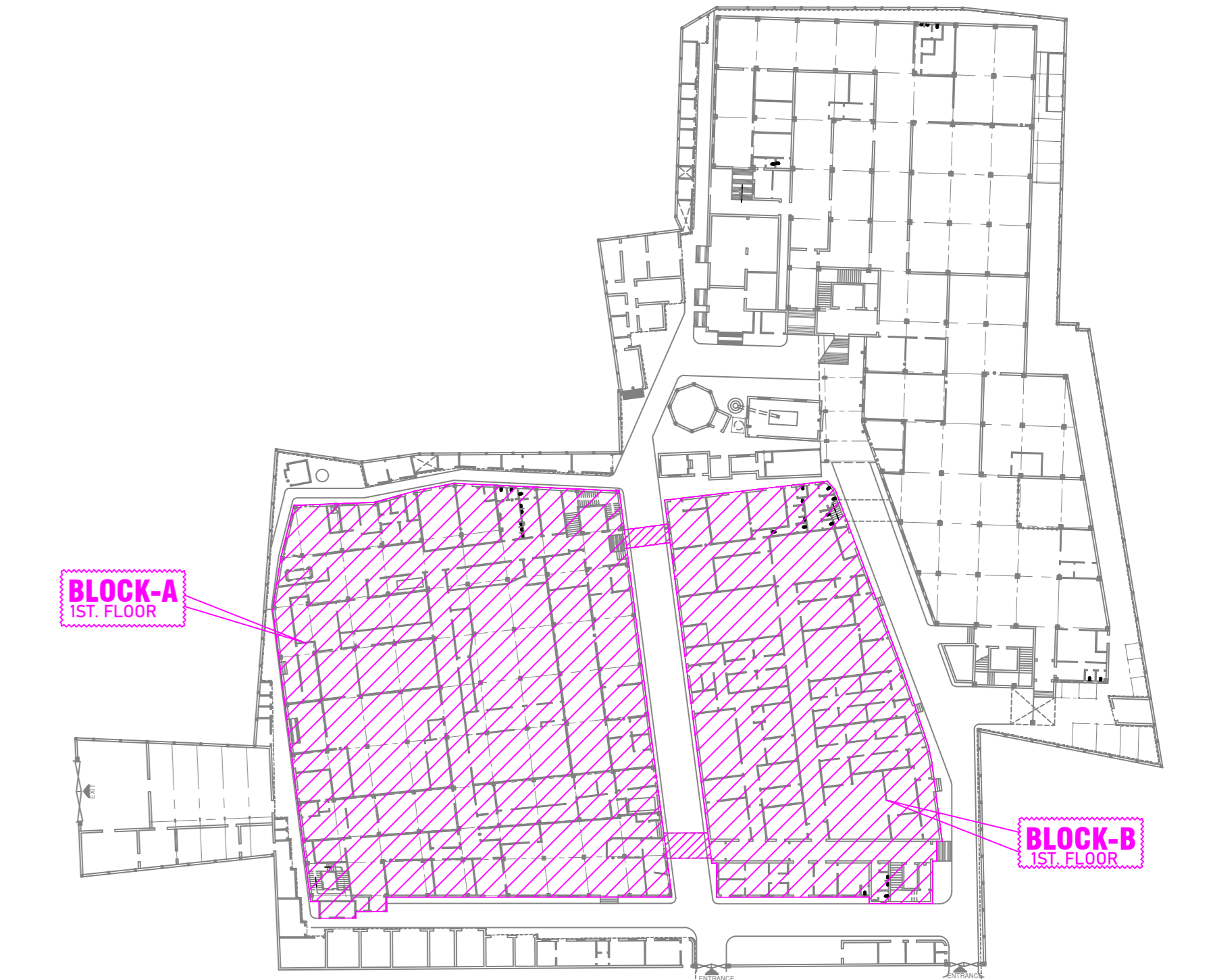


1ST. FLOOR LAYOUT PLAN OF SITE PLAN BLOCK NO - A & B (SCALE-1:100)



LOCATION PLAN (SCALE-1:600)
Only hatch portion details drawing shown in this sheet

SCHEDULE OF DOORS & WINDOWS			
MARK	DESCRIPTION	SIZE (WXH)	SL. WT.
G	STEEL GATE (DOUBLE LEAF)	2150X2500	
G1	STEEL GATE (DOUBLE LEAF)	3000X3000	
D	ALUMINIUM DOOR (Single leaf)	1000X2100	
D1	PVC DOOR (Single leaf)	750X2100	
D2	ALUMINIUM DOOR (Double leaf)	1200X2100	
D3	ALUMINIUM DOOR (Double leaf)	1500X2100	
D4	ALUMINIUM DOOR (Double leaf)	1800X2100	
W	ALUMINIUM WINDOW	1500X1200	900
W1	ALUMINIUM WINDOW	200X450	2500
W2	ALUMINIUM WINDOW	200X1200	300
W3	ALUMINIUM WINDOW	1000X1200	900
W4	ALUMINIUM WINDOW	3000X1200	300
W5	ALUMINIUM WINDOW	1000X1200	900
W6	ALUMINIUM WINDOW	3000X1200	300
W7	ALUMINIUM WINDOW	1000X1200	900
W8	ALUMINIUM WINDOW	3000X1200	300
W9	ALUMINIUM WINDOW	1000X1200	900
W10	ALUMINIUM WINDOW	3000X1200	300
W11	ALUMINIUM WINDOW	1000X1200	900
W12	ALUMINIUM WINDOW	3000X1200	300
W13	ALUMINIUM WINDOW	1000X1200	900
W14	ALUMINIUM WINDOW	3000X1200	300
W15	ALUMINIUM WINDOW	1000X1200	900
W16	ALUMINIUM WINDOW	3000X1200	300
W17	ALUMINIUM WINDOW	1000X1200	900
W18	ALUMINIUM WINDOW	3000X1200	300
W19	ALUMINIUM WINDOW	1000X1200	900
W20	ALUMINIUM WINDOW	3000X1200	300
W21	ALUMINIUM WINDOW	1000X1200	900
W22	ALUMINIUM WINDOW	3000X1200	300
W23	ALUMINIUM WINDOW	1000X1200	900
W24	ALUMINIUM WINDOW	3000X1200	300
W25	ALUMINIUM WINDOW	1000X1200	900
W26	ALUMINIUM WINDOW	3000X1200	300
W27	ALUMINIUM WINDOW	1000X1200	900
W28	ALUMINIUM WINDOW	3000X1200	300
W29	ALUMINIUM WINDOW	1000X1200	900
W30	ALUMINIUM WINDOW	3000X1200	300
W31	ALUMINIUM WINDOW	1000X1200	900
W32	ALUMINIUM WINDOW	3000X1200	300
W33	ALUMINIUM WINDOW	1000X1200	900
W34	ALUMINIUM WINDOW	3000X1200	300
W35	ALUMINIUM WINDOW	1000X1200	900
W36	ALUMINIUM WINDOW	3000X1200	300
W37	ALUMINIUM WINDOW	1000X1200	900
W38	ALUMINIUM WINDOW	3000X1200	300
W39	ALUMINIUM WINDOW	1000X1200	900
W40	ALUMINIUM WINDOW	3000X1200	300
W41	ALUMINIUM WINDOW	1000X1200	900
W42	ALUMINIUM WINDOW	3000X1200	300
W43	ALUMINIUM WINDOW	1000X1200	900
W44	ALUMINIUM WINDOW	3000X1200	300
W45	ALUMINIUM WINDOW	1000X1200	900
W46	ALUMINIUM WINDOW	3000X1200	300
W47	ALUMINIUM WINDOW	1000X1200	900
W48	ALUMINIUM WINDOW	3000X1200	300
W49	ALUMINIUM WINDOW	1000X1200	900
W50	ALUMINIUM WINDOW	3000X1200	300
W51	ALUMINIUM WINDOW	1000X1200	900
W52	ALUMINIUM WINDOW	3000X1200	300
W53	ALUMINIUM WINDOW	1000X1200	900
W54	ALUMINIUM WINDOW	3000X1200	300
W55	ALUMINIUM WINDOW	1000X1200	900
W56	ALUMINIUM WINDOW	3000X1200	300
W57	ALUMINIUM WINDOW	1000X1200	900
W58	ALUMINIUM WINDOW	3000X1200	300
W59	ALUMINIUM WINDOW	1000X1200	900
W60	ALUMINIUM WINDOW	3000X1200	300
W61	ALUMINIUM WINDOW	1000X1200	900
W62	ALUMINIUM WINDOW	3000X1200	300
W63	ALUMINIUM WINDOW	1000X1200	900
W64	ALUMINIUM WINDOW	3000X1200	300
W65	ALUMINIUM WINDOW	1000X1200	900
W66	ALUMINIUM WINDOW	3000X1200	300
W67	ALUMINIUM WINDOW	1000X1200	900
W68	ALUMINIUM WINDOW	3000X1200	300
W69	ALUMINIUM WINDOW	1000X1200	900
W70	ALUMINIUM WINDOW	3000X1200	300
W71	ALUMINIUM WINDOW	1000X1200	900
W72	ALUMINIUM WINDOW	3000X1200	300
W73	ALUMINIUM WINDOW	1000X1200	900
W74	ALUMINIUM WINDOW	3000X1200	300
W75	ALUMINIUM WINDOW	1000X1200	900
W76	ALUMINIUM WINDOW	3000X1200	300
W77	ALUMINIUM WINDOW	1000X1200	900
W78	ALUMINIUM WINDOW	3000X1200	300
W79	ALUMINIUM WINDOW	1000X1200	900
W80	ALUMINIUM WINDOW	3000X1200	300
W81	ALUMINIUM WINDOW	1000X1200	900
W82	ALUMINIUM WINDOW	3000X1200	300
W83	ALUMINIUM WINDOW	1000X1200	900
W84	ALUMINIUM WINDOW	3000X1200	300
W85	ALUMINIUM WINDOW	1000X1200	900
W86	ALUMINIUM WINDOW	3000X1200	300
W87	ALUMINIUM WINDOW	1000X1200	900
W88	ALUMINIUM WINDOW	3000X1200	300
W89	ALUMINIUM WINDOW	1000X1200	900
W90	ALUMINIUM WINDOW	3000X1200	300
W91	ALUMINIUM WINDOW	1000X1200	900
W92	ALUMINIUM WINDOW	3000X1200	300
W93	ALUMINIUM WINDOW	1000X1200	900
W94	ALUMINIUM WINDOW	3000X1200	300
W95	ALUMINIUM WINDOW	1000X1200	900
W96	ALUMINIUM WINDOW	3000X1200	300
W97	ALUMINIUM WINDOW	1000X1200	900
W98	ALUMINIUM WINDOW	3000X1200	300
W99	ALUMINIUM WINDOW	1000X1200	900
W100	ALUMINIUM WINDOW	3000X1200	300

CLIENT:-
DEY'S MEDICAL STORES (MFG) LIMITED
ADDRESS:-
62, BONDEL ROAD, KOLKATA-700019

SUBJECT:-	DRAWN BY:	PINKI	Consultant
	CHECKED BY:	JGT	
	APPROVED BY:		
	SCALE:	1:50	
	DATE:	29.07.2023	
	REV.:	8	
	SHEET NO.:	9	

1ST. FLOOR LAYOUT DETAILS OF BLOCK A & B
LEGEND NO-1 TO 52
53 TO 98