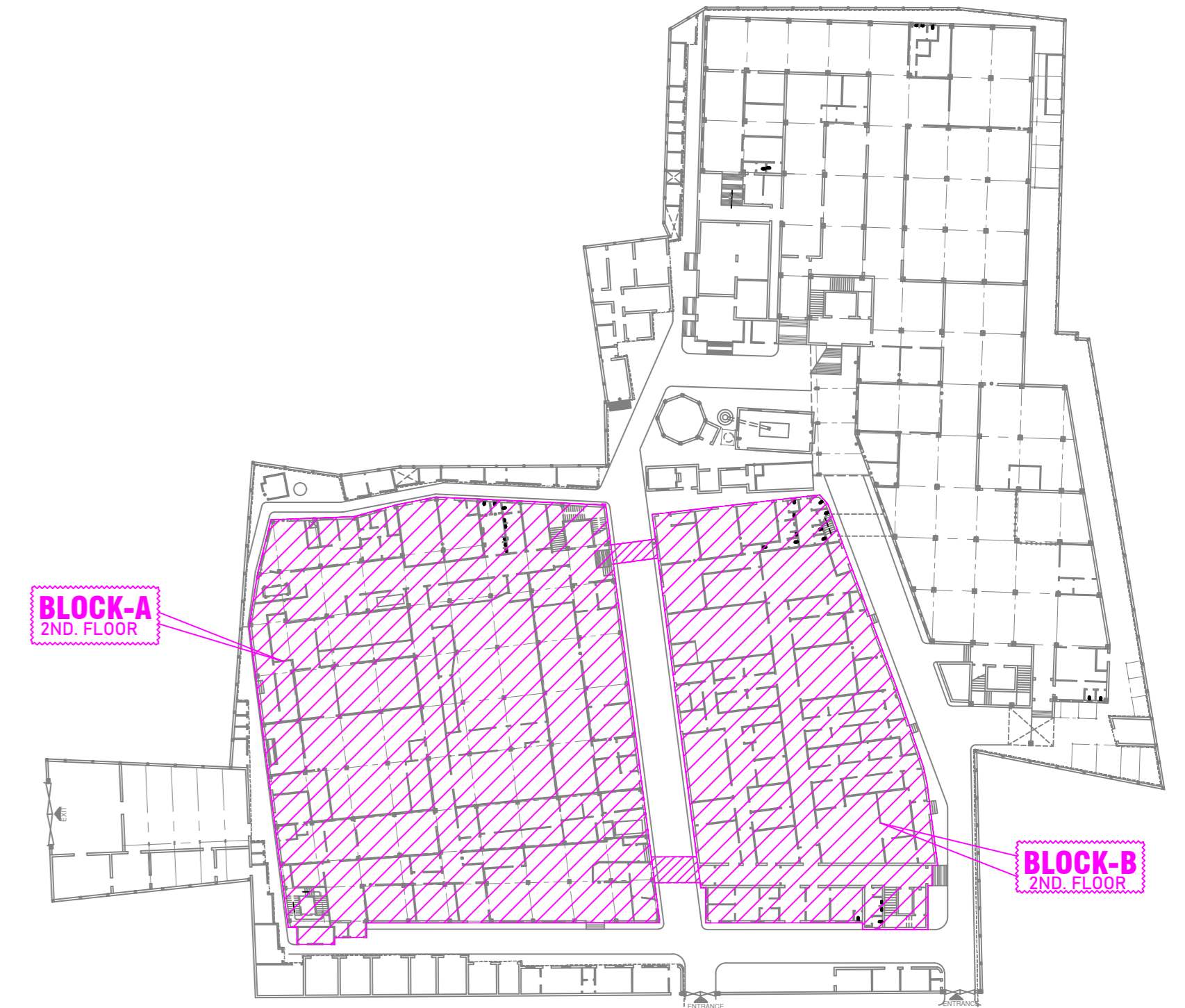


2ND. FLOOR LAYOUT PLAN OF SITE PLAN BLOCK NO - A & B (SCALE-1:100)



LOCATION PLAN (SCALE-1:600)
Only hatch portion details drawing shown in this sheet

| SCHEDULE OF DOORS & WINDOWS | | | | LIST OF MACHINERY & EQUIPMENTS | |
|-----------------------------|--------------------------|------------|---------|--------------------------------|-------------------------|
| MARK | DESCRIPTION | SIZE (WXH) | SL. HT. | MARK | DESCRIPTION |
| G | STEEL GATE (DOUBLE LEAF) | 2100X2500 | | 1 | COMPRESSION MACHINE |
| G1 | STEEL GATE (DOUBLE LEAF) | 3000X3000 | | 2 | CAPSULE FILLING MACHINE |
| D | ALUMINIUM DOOR (SWG-16) | 1000X2100 | | 3 | DRIVE BLENDER |
| D1 | PVC DOOR (SWG-16) | 750X2100 | | 4 | VIBRATING SIFTER |
| D2 | ALUMINIUM DOOR (SWG-16) | 1500X2100 | | 5 | TRAY DRYER |
| D3 | ALUMINIUM DOOR (SWG-16) | 1500X2100 | | 6 | DOUBLE CONE BLENDER |
| D4 | ALUMINIUM DOOR (SWG-16) | 1500X2100 | | 7 | DISPENSING MACHINE |
| D5 | ALUMINIUM DOOR (SWG-16) | 1500X2100 | | 8 | STABILITY CHAMBER |
| D6 | ALUMINIUM DOOR (SWG-16) | 1500X2100 | | 9 | ONE BLENDER |
| D7 | ALUMINIUM DOOR (SWG-16) | 1500X2100 | | 10 | COMPRESSOR |
| D8 | ALUMINIUM DOOR (SWG-16) | 1500X2100 | | 11 | CHILLER |
| D9 | ALUMINIUM DOOR (SWG-16) | 1500X2100 | | 12 | DRYER |
| D10 | ALUMINIUM DOOR (SWG-16) | 1500X2100 | | 13 | CAPSULE STRIP MACHINE |
| D11 | ALUMINIUM DOOR (SWG-16) | 1500X2100 | | 14 | CAPSULE BLESTER MACHINE |
| D12 | ALUMINIUM DOOR (SWG-16) | 1500X2100 | | 15 | CAPSULE PACKING MACHINE |
| D13 | ALUMINIUM DOOR (SWG-16) | 1500X2100 | | 16 | DE FOLKING MACHINE |
| D14 | ALUMINIUM DOOR (SWG-16) | 1500X2100 | | 17 | STRIP PACKING MACHINE |
| D15 | ALUMINIUM DOOR (SWG-16) | 1500X2100 | | 18 | TABLET BLESTER MACHINE |
| D16 | ALUMINIUM DOOR (SWG-16) | 1500X2100 | | 19 | DE DUSTING MACHINE |

CLIENT:-
DEY'S MEDICAL STORES (MFG) LIMITED
ADDRESS:-
62, BONDEL ROAD, KOLKATA-700019

| | | |
|-----------|--------------|------------|
| SUBJECT:- | DRAWN BY: | PINKALI |
| | CHECKED BY: | JGT |
| | APPROVED BY: | |
| | SCALE: | 1:100 |
| | DATE: | 29.07.2022 |
| | REV.: | 8 |
| | SHEET NO.: | 4 of 8 |

OFFICE ADDRESS: 10/10, RAJENDRA NAGAR, KOLKATA-700007