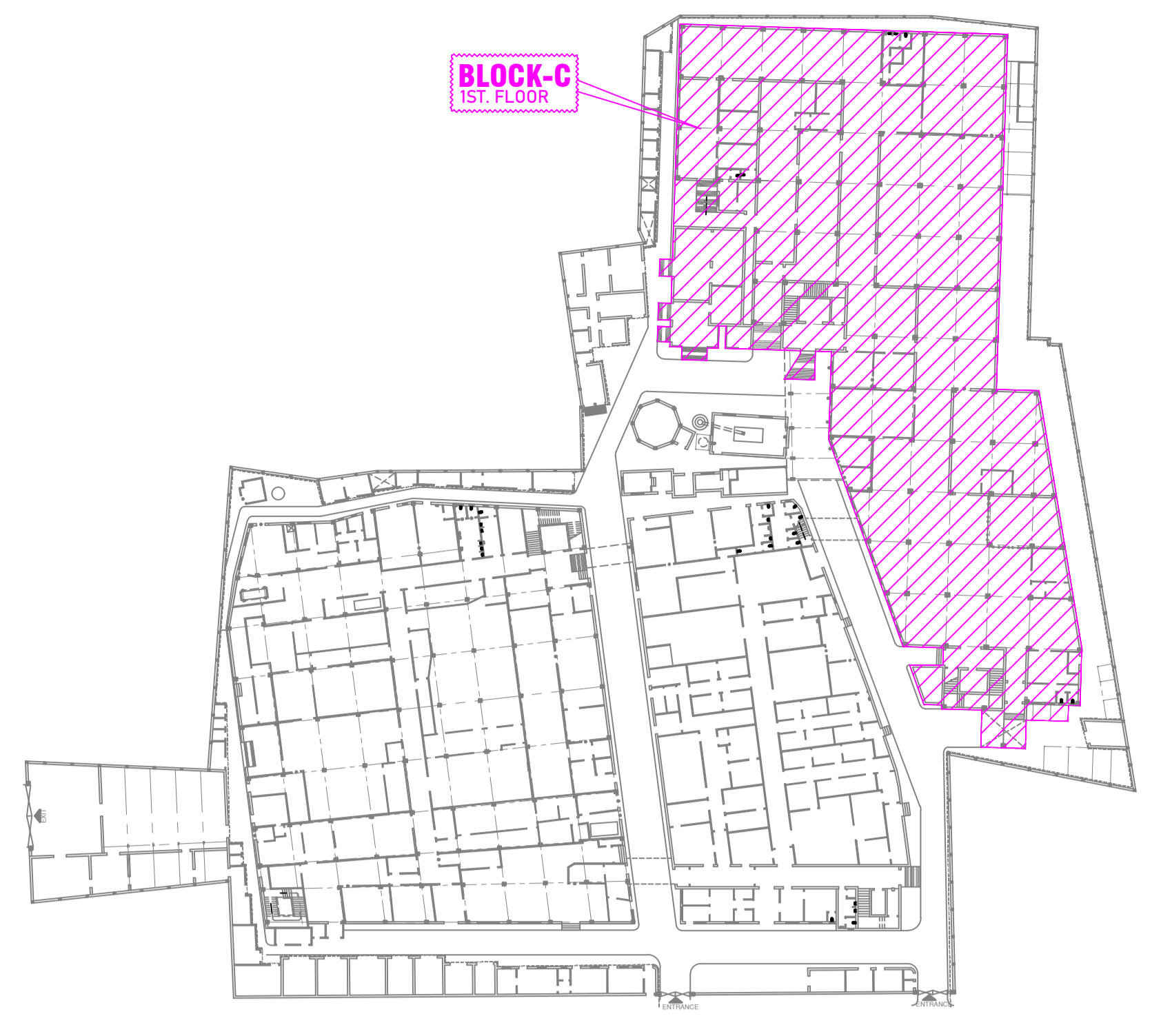


**1ST. FLOOR LAYOUT PLAN OF SITE PLAN BLOCK NO - C (SCALE-1:100)**



**LOCATION PLAN (SCALE-1:600)**  
Only hatch portion details drawing shown in this sheet

LIST OF MACHINERY & EQUIPMENTS		
MARK	DESCRIPTION	NO. OF
1	DESH WASHER	1
2	DIESEL OVEN	2
3	CHARGING VAT (BODY OIL)	1
4	STORAGE VAT (BODY OIL)	10
5	CHARGING VAT (AYURVEDIC LIQUIDS)	2
6	STORAGE VAT (AYURVEDIC LIQUIDS)	3
7	WASHING MACHINE (AYURVEDIC LIQUIDS)	2
8	TRAY TABLE (AYURVEDIC LIQUIDS)	1
9	FILLING TANK (AYURVEDIC LIQUIDS)	1
10	FILLING MACHINE (AYURVEDIC LIQUIDS)	1
11	OPPING MACHINE (AYURVEDIC LIQUIDS)	1
12	LABELING MACHINE (AYURVEDIC LIQUIDS)	1
13	PROOF TABLE (DYESTUFFS/INKS)	1
14	FILLING TANK (BODY OIL)	1
15	FILLING MACHINE (BODY OIL)	1
16	CAPPING MACHINE (BODY OIL)	1
17	BILLING MACHINE (BODY OIL)	1
18	LABELING MACHINE (BODY OIL)	1
19	PROOF TABLE (DYESTUFFS/INKS)	1
20	GRINDING MACHINE	1
21	SIFTER MACHINE	1
22	PACKING TABLE	1
23	BLENDER MACHINE	1
24	AIR HANDLING UNIT (AKE)	1
25	DRYER	2
26	COMPRESSOR	3
27	CAPSULE FILLING MACHINE	3
28	MIXING MACHINE	2
29	CONE MIXER	1
30	CONC. MIXER	2
31	AIR DRYER	1

SCHEDULE OF DOORS & WINDOWS			
MARK	DESCRIPTION	SIZE (WxH)	SL. HT.
G	STEEL GATE (DOUBLE LEAF)	7100 X 2000	
G1	STEEL GATE (DOUBLE LEAF)	3000 X 2000	
D	ALUMINUM DOOR (Single leaf)	1000 X 2100	
D1	PVC DOOR (Single leaf)	1700 X 2100	
D2	ALUMINUM DOOR (Double leaf)	1500 X 2100	
D3	ALUMINUM DOOR (Double leaf)	1500 X 2100	
D4	ALUMINUM DOOR (Double leaf)	1800 X 2100	
W	ALUMINUM WINDOW	1500 X 1200	900
W1	ALUMINUM WINDOW	600 X 450	250
W2	ALUMINUM WINDOW	2400 X 1200	900
W3	ALUMINUM WINDOW	1000 X 1200	900
EF	EXHAUST FAN	300	250

CLIENT:-  
**DEY'S MEDICAL STORES (MFG) LIMITED**  
ADDRESS:- 62, BONDEL ROAD, KOLKATA-700019

	SUBJECT:-	DRAWN BY:	PINKI
	1ST. FLOOR LAYOUT DETAILS OF BLOCK C (LEGEND NO.- 99 TO 134)	CHECKED BY:	JOY
		APPROVED:	
		SCALE:	1:100
		DATE:	29.07.2022
		REV:	0
		SHEET NO.:	8 of 15

