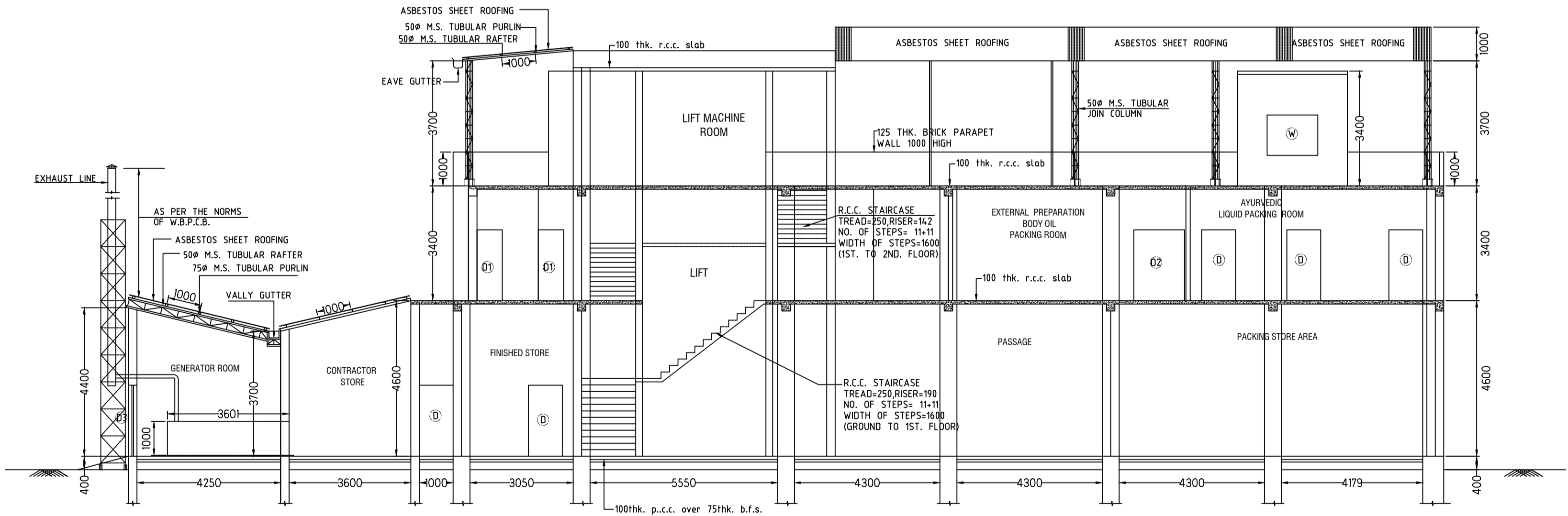


**SECTIONAL ELEVATION- E E (SCALE-1:100)**



**SECTIONAL ELEVATION- F F (SCALE-1:100)**

SCHEDULE OF DOORS & WINDOWS			
MARK	DESCRIPTION	SIZE (WXH)	SL. HT.
G	STEEL GATE (DOUBLE LEAF)	2150 X 2500	
G1	STEEL GATE (DOUBLE LEAF)	3000 X 3000	
D	ALUMINUM DOOR (Single leaf)	1000 X 2100	
D1	PVC DOOR (Single leaf)	750 X 2100	
D2	ALUMINUM DOOR (Double leaf)	1200 X 2100	
D3	ALUMINUM DOOR (Double leaf)	1500 X 2100	
D4	ALUMINUM DOOR (Double leaf)	1800 X 2100	
W	ALUMINUM WINDOW	1500 X 1200	900
W1	ALUMINUM WINDOW	600 X 450	2650
W2	ALUMINUM WINDOW	2400 X 1200	900
W3	ALUMINUM WINDOW	1000 X 1200	900
EF	EXHAUST FAN	3000	2650

CLIENT:-  
**DEY'S MEDICAL STORES (MFG) LIMITED**

ADDRESS:-  
 62, BONDEL ROAD, KOLKATA-700019

SUBJECT:-

DRAWN BY	PINAKI
CHECKED BY	JOY
APPROVED	
SCALE	1:100
DATE	29.07.2022
REV.	0
SHEET NO.	10 of 15

ALL SECTIONAL ELEVATION DETAILS OF BLOCK - C (LEGEND NO.- 99 TO 131a)

CONSULTANT:  
**SILPA BANERJEE**  
 8744, 105/91 H. Rd. Howrah - 711005  
 Kolkata-700 012, (983440777)